

# Chiba City Life Independence and Work Counseling Center



Social welfare  
Corporation

**Heartful Chiba**

**Chiba City Council of Social Welfare**



**Hearty Chan**



**We carry out a support project to support the independence of people in need. Operated on consignment from Chiba City**

### **Purpose**

- ◆ Those who are worried about their lives or who are not confident in getting a job (hereinafter referred to as "living poor" We help those who are "living poor" to get out of poor conditions by providing comprehensive and continuous consultation support according to the state of their living condition.
- To be Independent in Chiba City we help those who are living poor by understanding issues such as employment and provide cross-sectional support system, By doing so, we help them to become independent.

### **Target Person**

Those who live in Chiba City and are in need of support.  
Except for those who are receiving welfare support

for example

- It's been a long time since I left work and I can't get a job easily
- I can't get along well with my surroundings, my work won't last long!
- often stay in the house, so I can't stand on my own...  
•Etc



### **Place**

**Chiba City Chuou Ward 4-15-1 Qiball 11th Floor**

### **Opening Hours**

**Monday ~ Friday (Except Sat/Sunday, Dec 29 - Jan 3)  
8:30 ~ 17 : 30**

### Independence consultation support business

Understanding, evaluating, and analyzing various situations and problems of people in need of living are effective for independence.

We will formulate and provide support plan so that various types of support can be provided. In addition, evaluations are conducted regularly even during support implementation, and plans are reviewed and adjusted according to the situation.

We will also provide follow up consultations to maintain a stable life even after the end.

### Work preparation support business

Create a step-by-step employment support program according to the problems faced by people in need and develop abilities for actual employment which enables recovery of daily life and social independence. We will develop the basic abilities necessary for employment through work training and other activities.

### Household consultation support business

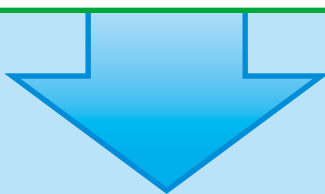
In order to support the reconstruction of households of people in need, we will formulate a household support plan to improve the income and expenditure for improving household management ability.

In addition, if necessary, we will introduce the social security system and provide consultation on various benefits for reduction and exemption to rebuild households.



The essence of the process

**Independence consultation support business** ※refer graph



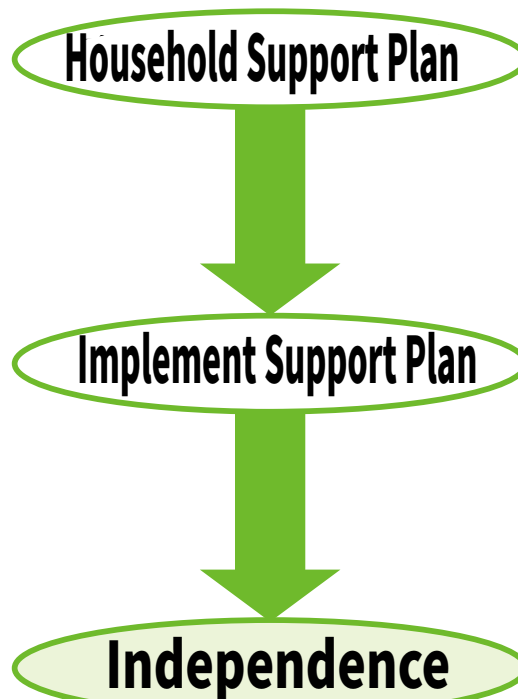
**Job preparation support**

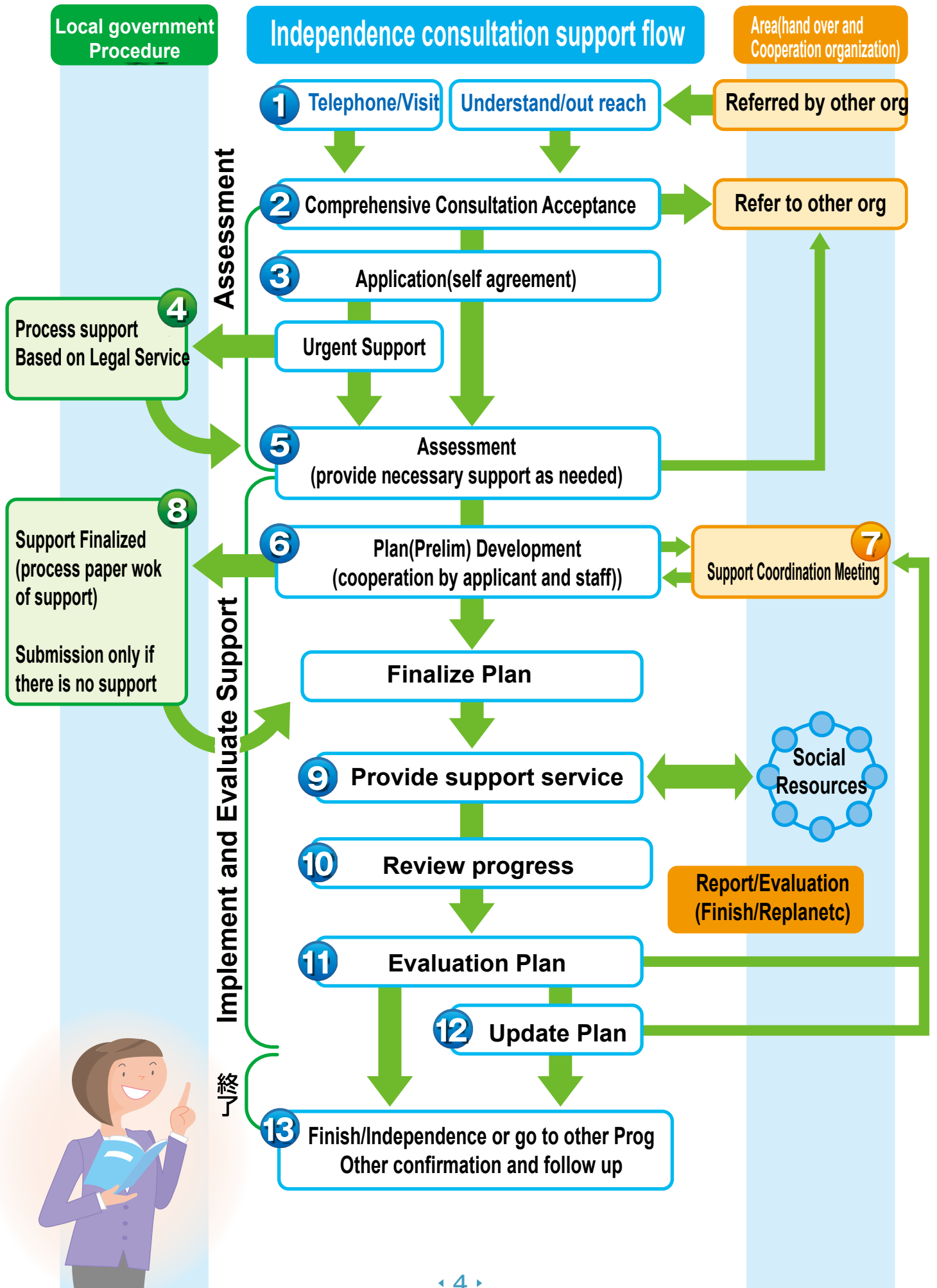
※refer fig

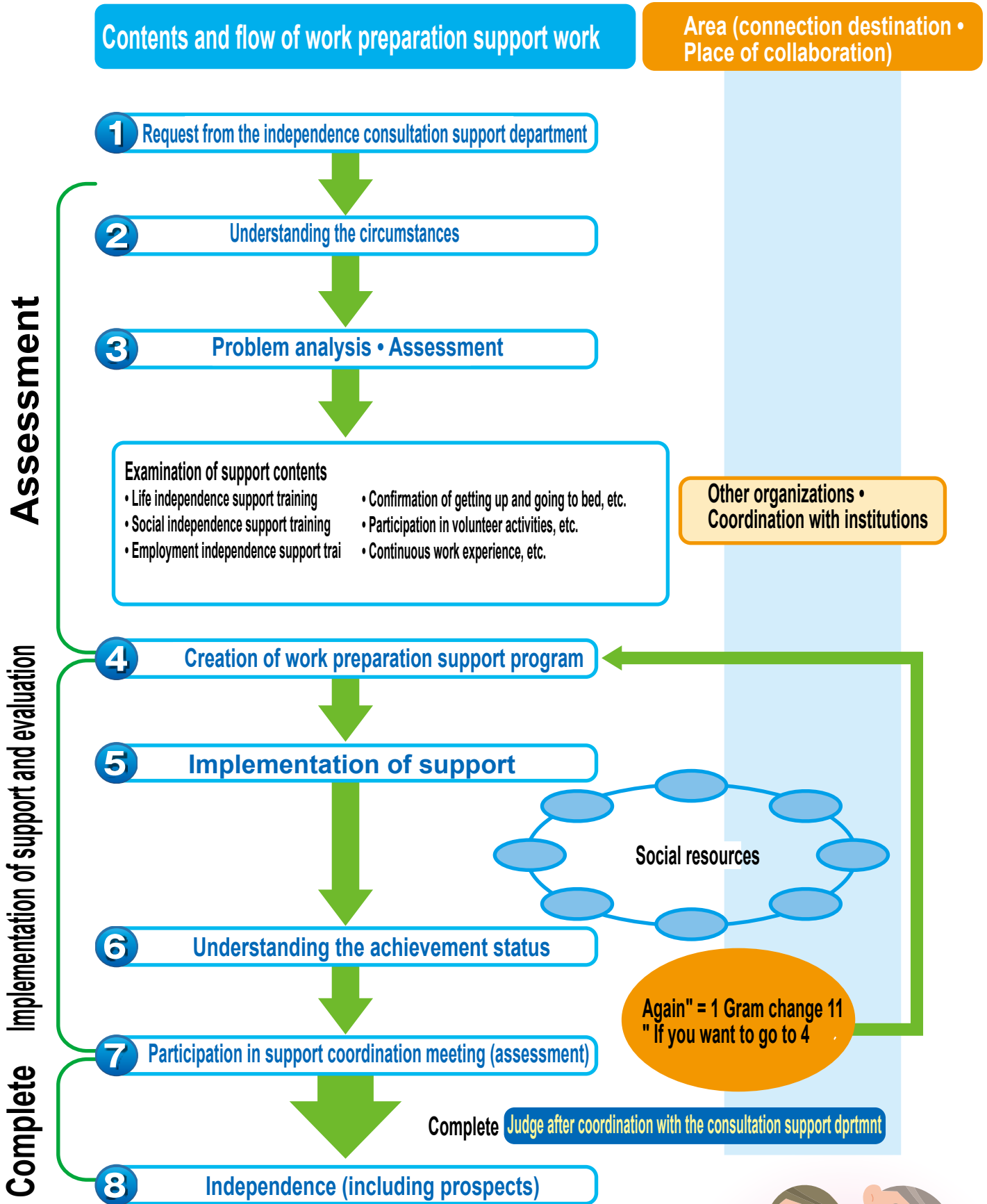


**Household consultation support**

※refer fig







Flow of work of household consultation support

Area (connection destination  
• place of collaboration)

1 Requests from consultation or lending organizations Personal consultation

2 Understanding / screening of circumstances

Connection to other institutions

3 Problem analysis • Assessment

4 Formulation of household support

5 Implementation support

- Income and expenditure improvement plan based on the creation of household budget table
- Support adjustment by debt consolidation and adult guardianship
- Benefits • Introducing the exemption system window
- Mediation for loan use, etc.



6 Confirmation of progress status

In case of home economy improvement Revisit No 4

7 Attend support coordination meetings

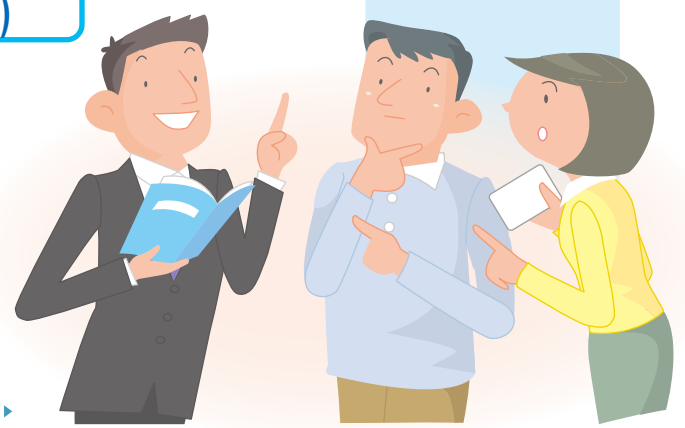
Complete Judgment after coordination with support dept

8 Independence(including prospect)

アセスメント

支援の実施・評価

終了





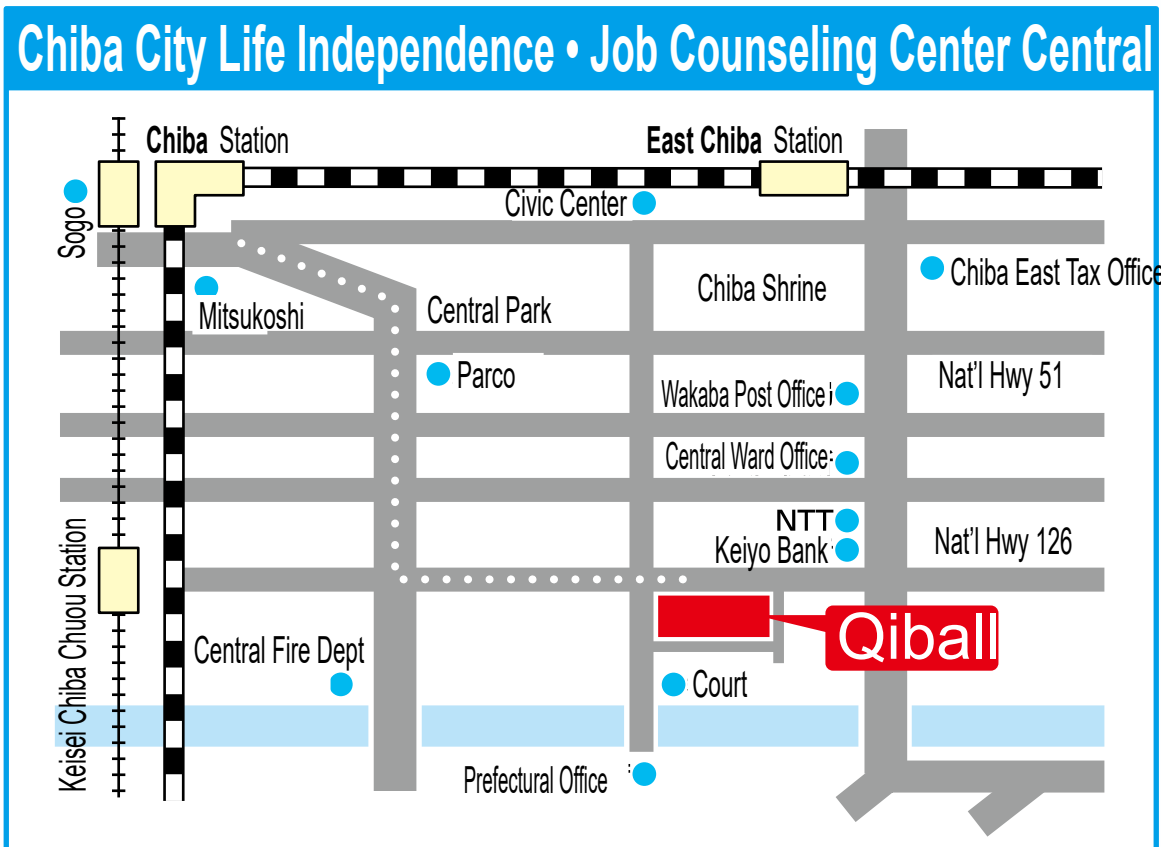
Please contact us  
by phone, fax or email.

Free  
Consultation

**TEL 043 (202) 5563**

**FAX 043 (221) 3370**

**E-mail soudan-chu@chiba-shakyo.jp**



**Qiball 15th Floor**

|          |                           |                           |  |   |
|----------|---------------------------|---------------------------|--|---|
| Elevator | Volunteer Activity Room 1 | Volunteer Activity Room 2 |  | Social Welfare Council<br>Central Ward Office |
|          |                           |                           | Life Independence<br>Work Consultation<br>Center-Central |   |

