

[Items required when moving in] \*Please write your name on all items.

**What to prepare**

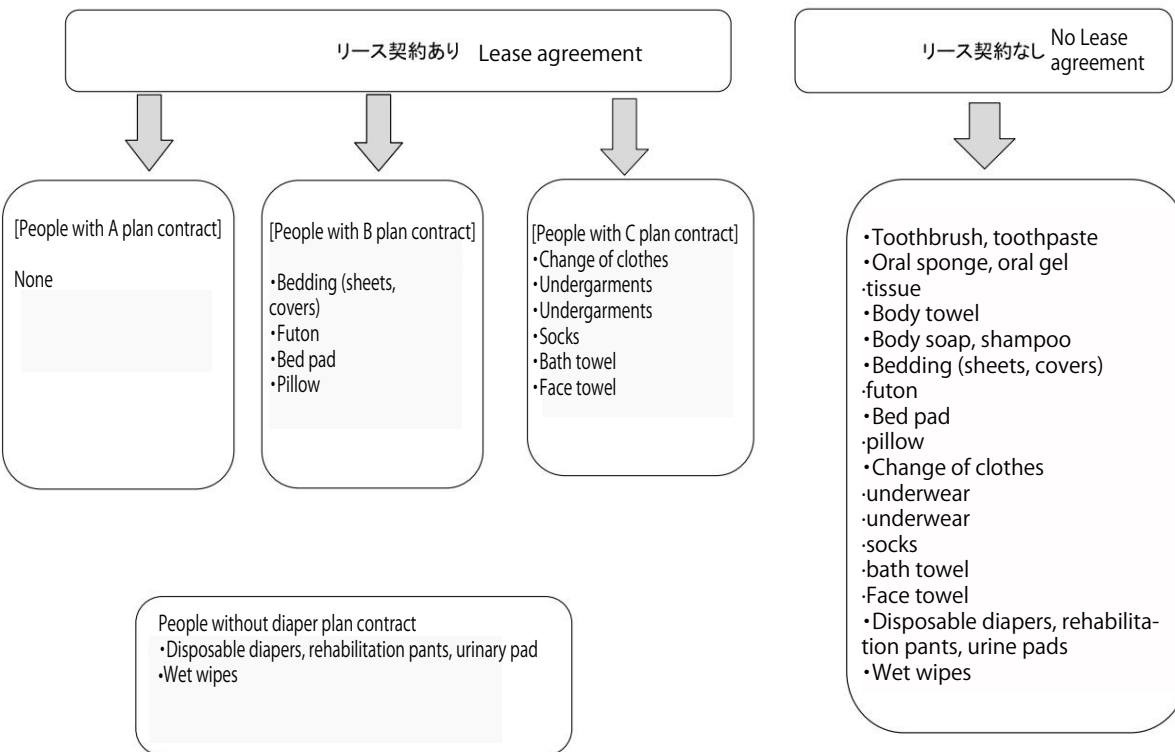
- Cups (for oral care, eating and drinking)
- Drinks
- Laundry detergent
- Laundry basket
- Laundry net
- Hangers, clothespins
- Indoor shoes
- Outdoor shoes
- Outerwear (cardigan, jumper, etc.)
- Refrigerator (food and drinking water are to be managed by the individual)
- Table clock
- Calendar
- Disposable gloves (M or L size)
- Medications to bring with you
- Medication notebook
- Health insurance card
- Disability notebook
- Special medical expenses recipient card
- Seal (for those who cannot sign for themselves)
- Certificate of limit applicability
- Cost ratio certificate
- Waterproof sheet

**Items to prepare if necessary**

- Care tableware (spoon, chopsticks, etc.)
- Thickening material
- Apron
- Straw cap
- Straw
- Gargle basin
- Sucking bottle
- Denture case
- Denture cleaner
- Meals to eat
- Snacks
- Alcohol cotton
- Shaving
- Rack with drawers, chest of drawers (for storing clothes, etc.)
- TV (if necessary)
- S-hook
- Safety box (for managing money)
- Black plastic bag (for diapers, toiletries, etc.)
- Body pillow (for those who cannot move much)
- Empty bed bottle, foam body soap (for washing the genitals)
- Moisturizer

リース契約あり Lease agreement

リース契約なし No Lease agreement



toothpaste  
e, oral gel

shampoo  
eets,

clothes  
ents  
ents

rs, rehabilitation pants, urinary pad